



RESIDENCE

14 Burn Bridge Drive, Strathaven, ML10 6UP

www.residenceestateagents.co.uk



Viewing by appointment with Residence Strathaven

T: 01357 572222 | E: strathaven@residencestateagents.co.uk | A: 3 Bridge Street, Strathaven, ML10 6AN





3 Bedrooms | 1 Public Rooms | 1 Bathrooms

A lovely three-bedroom semi-detached villa situated within the ever-popular Burn Bridge Drive in Strathaven. Ideally positioned, the property is just a short walk from the town centre and a wide range of local amenities.

Internally, the accommodation comprises a welcoming entrance vestibule with convenient WC, leading into a bright and spacious front-facing lounge. The lounge provides access to a generously sized kitchen/diner, which flows seamlessly into a charming rear conservatory —perfect for both everyday living and entertaining.

The upper level hosts two spacious double bedrooms, a single bedroom and a modern shower room.

Externally, the property benefits from a monoblock driveway to the front, offering off-street parking for multiple vehicles. To the rear, there is a fully enclosed private garden featuring a lawn and substantial patio area, ideal for outdoor dining and relaxation.

Burn Bridge Drive is a popular residential development only 5 minutes away from the Common Green. Strathaven is an admired and popular market Town which offers an excellent mix of shopping facilities and sports facilities including swimming baths, bowling clubs, golf courses, public parks and country walks. The area is highly regarded for its schooling whilst for those commuting, there are excellent road links to the surrounding towns including East Kilbride, Hamilton and also links to the M74 motorway which connects the M8 motorway to Glasgow and Edinburgh.



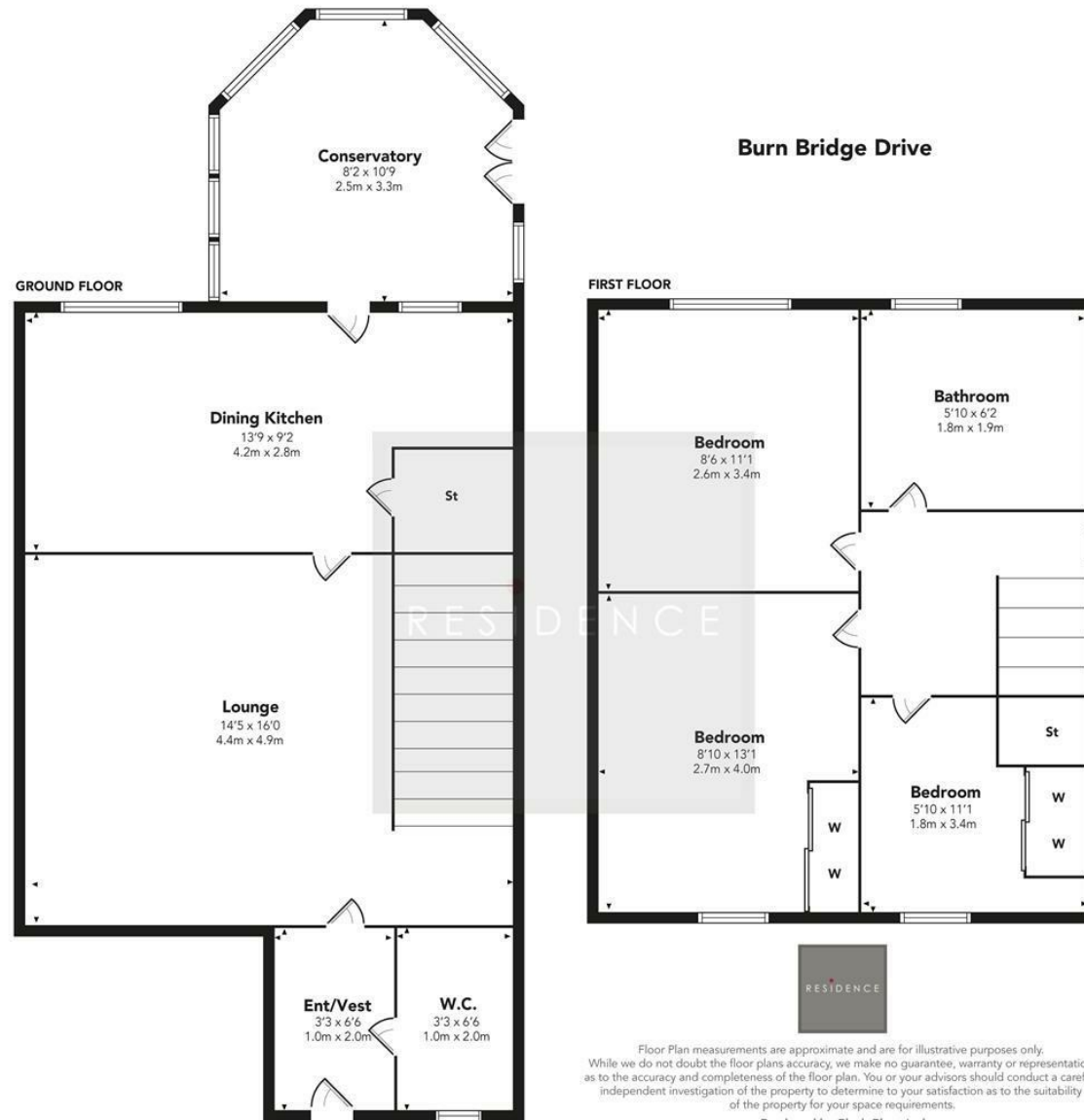
828.82 sq ft | EER = C



RESIDENCE







Floor Plan measurements are approximate and are for illustrative purposes only. While we do not doubt the floor plans accuracy, we make no guarantee, warranty or representation as to the accuracy and completeness of the floor plan. You or your advisors should conduct a careful, independent investigation of the property to determine to your satisfaction as to the suitability of the property for your space requirements.

Produced by Plush Plans Ltd

We believe these details to be accurate; however, they do not form any part of a contract. Fixtures and fittings are not included unless specified in the enclosed. Photographs are for general information and it must not be inferred that any item is included for sale with the property. All distances and measurements are approximate. Floorplans may not be to scale and are for illustration purposes only.